



## Palantir Partners with Watson to Create Environmentally Sustainable Workplace

### CLIENT

## Palantir.net

Chicago, Illinois

### APPLICATION

- Private Office
- Open Office

### CHALLENGE

- Sustainability requirements
- Space planning challenges

### SOLUTION

- Watson's sustainable manufacturing practices
- Creative space planning solutions and customer service

### SCOPE

- Two single occupant private offices
- One open office
- 14 workstations
- 3,900 square feet

### PROJECT DESCRIPTION

After more than a decade developing award-winning interactive technology solutions, Palantir.net had outgrown its suburban Chicago offices. Owners Tiffany Farriss and George DeMet made the decision to move the company into the city, enabling it to more effectively provide its full range of custom interactive web site, database application and software development services to an ever-expanding customer base. With newly acquired offices nestled between Chicago's Lincoln Park and Bucktown neighborhoods, Palantir began searching for furnishings that would complement their team of professionals, and would also exemplify the company's environmental stewardship.

### PROJECT SCOPE

With 3,900 square feet of Chicago office space, Palantir used Miro™ worksurfaces and storage components to outfit both its private and open offices.

### ELEMENTS

Miro worksurfaces and storage components.

### PROJECT TEAM

#### Tiffany Farriss

*Palantir, Owner*

#### George DeMet

*Palantir, Owner*

#### Jeanne Rickard

*Jeanne Rickard Interiors, Designer*

#### Joshua Mills

*Watson Furniture Group,*

*Project Coordinator*

### Mike Cohan

*Watson Furniture Group,*

*Corporate Accounts Representative*

### Paul Flavion

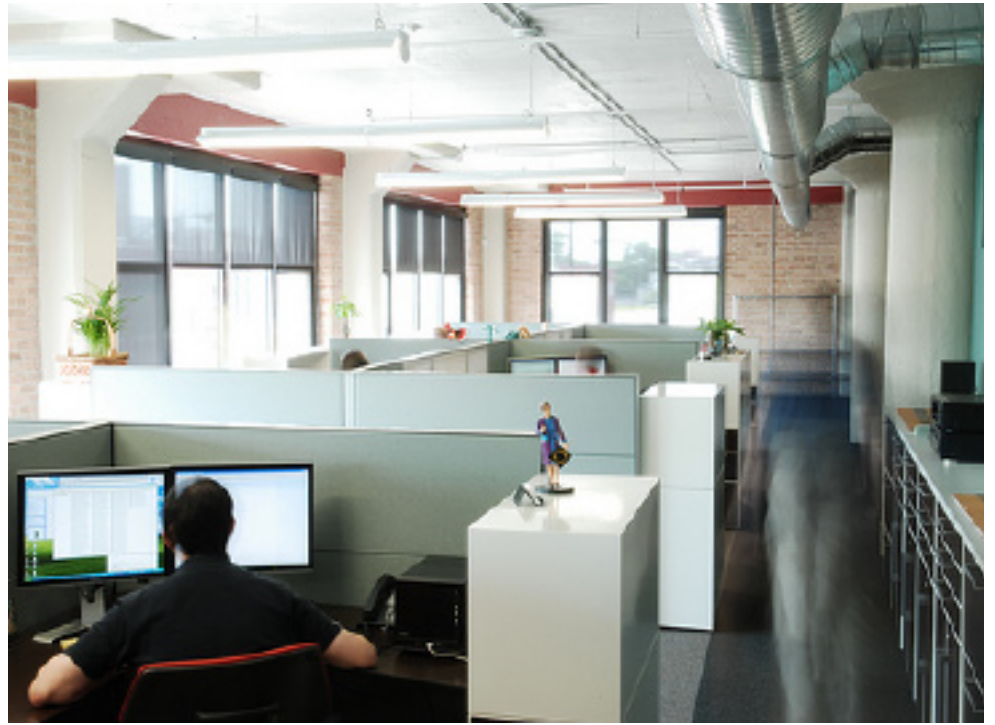
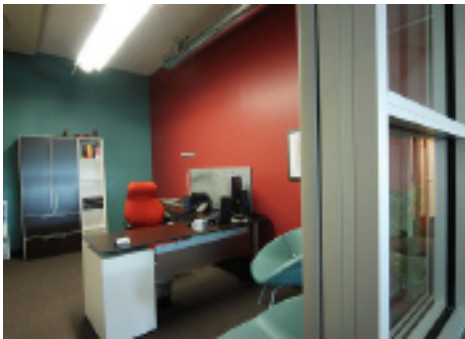
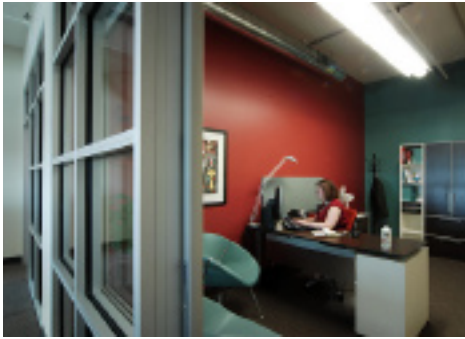
*Henricksen, Dealer*

### THE WATSON EDGE

Palantir knew that it would be difficult to find a furniture manufacturer that shared its environmental values. "Both George and I personally believe in sustainability; this influences everything we do as a company, from the type of paper that we purchase to carbon balancing at the end of each year" said Farriss. Acting as an initial sustainability consultant, Susan Besson of swbdesign suggested Watson's Miro offering for its sustainability, referring Palantir to Jeanne Rickard Interiors for further design consultation. Tiffany, George, and the rest of the Palantir team fell in love with the offering's rectilinear, European inspired aesthetic, and felt a bond with Watson as they learned of its sustainable practices and low-impact manufacturing in the Pacific Northwest.

### Sustainability

Awarded Indoor Advantage™ certification through Scientific Certification Systems (SCS) for its low-emissions, Watson's Miro offering can contribute toward earning between five and 13 credits in projects seeking LEED certification. Made of 95% recycled wood materials, Miro worksurfaces and storage components are laminated with GREENGUARD certified laminates, bonded to wood with a water-based, low-VOC



emitting adhesive. Worksurface edges are coated with a Waterborne Urethane Polymer Emulsion coating, also certified Indoor Advantage™ by SCS for its low emissions. Worksurface bases and metal storage veneers are composed of 80% recycled (100% recyclable) cold-rolled steel.

#### Space Planning

With floor-to-ceiling columns in its new offices, and power routing only available through the building walls, space planning was a challenge for Watson's Project Coordinator Joshua Mills. Along with Jeanne Rickard, Joshua worked tirelessly to find an appealing layout that would allow for future expansion, and would maintain compliance with the American's with Disabilities Act (ADA). The result was a jazzy Chicago office packed with a big-city punch. "From the design perspective, we didn't have to compromise" said Rickard, "Miro is highly functional and at the same time it has all of the aesthetic and environmental qualities that Palantir required"

**"From the design perspective, we didn't have to compromise. Miro is highly functional and at the same time it has all of the aesthetic and environmental qualities that Palantir required".**

**Jeanne Rickard,**  
Owner of Jeanne Rickard Interiors

#### CONCLUSION

Watson's deep rooted dedication to the environment and unwavering customer service brought Palantir peace of mind as they settled into their brand new Chicago City offices.